



THE KNLE THROWBACK JAM!

BROUGHT TO YOU BY
NORTHLANDCHORALE.ORG

FRIDAY, APRIL 11, 2025 (A) 7:30PM
SATURDAY, APRIL 12, 2025 (A) 7:30PM
SUNDAY, APRIL 13, 2025 (A) 2:30PM

MUSICAL AND ARTISTIC DIRECTION BY
CHAD SHERIDAN

BEFORE WE BEGIN

Please remember to silence your phones and/or other devices prior to the beginning of the show. Photography is allowed, but the flash must be off. Video recording is not allowed. Refreshments will be available at intermission! Be sure to check out the throwback themed photo op in the lobby, and please tag The Northland Chorale in your posts: @thenorthlandsocials on Instagram and Northland Chorale Show Choir on Facebook. We know that everyone and their mothers want to keep these radical programs, but please consider returning them to the ushers when you dip out for the night. It allows us to recycle and for even more people to enjoy them!

THE KNLC THROWBACK JAM!

PERFORMING MEMBERS

SOPRANO

Jamie Brown
Mary Flaherty
Julie Hodson
Kristin Hurley*
Berta Mohar
Rachel Raudabaugh*
Myrna Tilton-Dollar
Nidia Warner

ALTO

Taylor Cozart Stovall
Karen Greening*
Jayden Hughes*
Loretta Southerland
Tracy St. Denis
Dawn Swan

BARITONE, BASS, & TENOR

Russ Canino
Steven George
Dene Merrow
Olympia Munoz

Marcie Vogel
Chad Sheridan
Austin Stovall
Glenn Vigil

MUSICIANS

Piano - Patti Abbate

Drums - Dirck Parsons

Guitar - Aidan De La Torre

Bass - Keegan De La Torre

NON-PERFORMING MEMBERS

Carol Anthony
Tracy Fehring
Victoria Velasquez*

BOARD OF
DIRECTORS

CAST - IN ORDER OF APPEARANCE



Mad Max - Chad Sheridan/Karen Greening

Glitch - Marcie Vogel/Steven George

Caller 1, Rod - Dene Merrow



Caller 2, Sharon - Jamie Brown

Caller 3, Leslie - Olympia Munoz

Caller 4, Jan - Rachel Raudabaugh

Caller 5, Kris - Kristin Hurley

Caller 6, Max & Commercial Announcer - Jayden
Hughes



ACT 1

Eye of the Tiger.....arranged by Eric Van Cleave

Sponsored by COVR Roofing via Connor Greening Choreographed by Karen Greening

I Will Survive/Survivor.....arranged by Mark Brymer

Featuring Julie Hodson, Kristin Hurley, Olympia Munoz, Rachel Raudabaugh,

Loretta Southerland, & Tracy St. Denis

Sponsored by Carol Anthony

Choreographed by Mary Flaherty

It's Still Rock and Roll to Me.....arranged by Paul Langford

Sponsored by Turn Up the Volume Salon

Choreographed by Mary Flaherty

Shake It Off.....arranged by Roger Emerson

Featuring Rachel Raudabaugh & Jayden Hughes

Sponsored by Madison Reed via Christopher Melchi

Choreographed by Rachel Raudabaugh

Thriller.....arranged by Mark Brymer

Sponsored by West Jewell Place - Lakewood, CO

Performed by the Stukey Notes

Choreographed by Jayden Hughes

Nine to Five.....arranged by Ed Lojeski

Featuring Karen Greening, Kristin Hurley, Rachel Raudabaugh, & Tracy St.

Denis

Sponsored by Dollar & Co Real Estate - Myrna Dollar, Broker

Choreographed by Steven George and Karen Greening

Africa.....arranged by Roger Emerson

Sponsored by Dene, Cheryl, and Ariel Merrow

Choreographed by Steven George

Thunder.....arranged by Mac Huff

Sponsored by Drew Morris for Thornton City Council

Choreographed by Jayden Hughes

ACT 2

Shut Up and Dance.....arranged by Mac Huff

Sponsored by Janet Hughes

Choreographed by Mary Flaherty

All About That Bass.....arranged by Roger Emerson

Featuring Taylor Cozart Stovall, Julie Hodson, Jayden Hughes, & Loretta Southerland

Sponsored by Savage Home Inspections

Choreographed by Rachel Raudabaugh

Livin' on a Prayer.....arranged by Mac Huff

Featuring Dawn Swan & Glenn Vigil

Sponsored by Swan Counseling Services

Choreographed by Karen Greening

Lean on Me.....arranged by Roger Emerson

Featuring Jamie Brown, Taylor Cozart Stovall, Steven George, Jayden Hughes, Olympia Munoz, Rachel Raudabaugh, Chad Sheridan, Tracy St. Denis, & Myrna Tilton-Dollar

Sponsored by Jill Parsons and Alain Brülé

Staged by Chad Sheridan

Dynamite.....arranged by Roger Emerson

Sponsored anonymously in support of the Stukey Notes

Featuring the Stukey Notes

YMCA.....arranged by Roger Emerson

Sponsored by Jim and Millie Patterson

Choreographed by Steven George

Love Shack.....arranged by Deke Sharon

Featuring Jamie Brown, Jayden Hughes, Berta Mohar, Olympia Munoz, Rachel Raudabaugh, Loretta Southerland, Austin Stovall, Myrna Tilton-Dollar, & Marcie Vogel

Sponsored by Uncle Paul's Love Shack

Staged by Steven George

We Are the World (25 for Haiti).....arranged by Roger Emerson

Featuring The Bell Choir of Brighton First Presbyterian Church, Mary Flaherty, Steven George, Julie Hodson, Jayden Hughes, Kristin Hurley, Dene Merrow, Rachel Raudabaugh, Chad Sheridan, Loretta Southerland, Tracy St. Denis, Dawn Swan, Glenn Vigil, & Marcie Vogel

Sponsored by Jenna McCormick

Staged by Steven George and Chad Sheridan

CREW

AMERICAN SIGN LANGUAGE COMMUNICATION FACILITATORS*

Hallie Hughes & Nyah Muniz

FLIERS AND PROGRAM

Jayden Hughes

FRONT OF HOUSE - BOX OFFICE, CONCESSIONS, PHOTOBOOTH, & USHERS

Cindy Adams, Ellie Barry, Tracy Fehring, Victoria Gomez, Aggie Hernandez, Janet Hughes, Elena Quintana, Alistair Reekie, Marta Sheridan, & Jeren Wuertemburg

HOUSE MANAGER

Lisa W. Robinson

LIGHTING DESIGN

Dene Merrow

LIGHTING TECHNICIAN & PROJECTIONIST

Mary Omohundro

PHOTOGRAPHY

Nick and Gina Kropelnicki - @nkphotography on Instagram & Altered Perspectives Media on Facebook

PLAYWRIGHTS

Jayden Hughes, Kristin Hurley, and Chad Sheridan

SET DESIGN

Taylor Cozart Stovall & Austin Stovall

STAGE MANAGER & ASSISTANCE

Peyton Munoz, Elena Quintana, Alistair Reekie, & Jeren Wuertemburg

TRANSPORTATION

Jamie Brown, Mary Flaherty, Steven George, Jayden Hughes, Kristin Hurley, & Jesse and Rachel Raudabaugh

VIDEOGRAPHY

Ram Dostal

*SATURDAY,
APRIL 12TH
ONLY

COW-A-BINGO!
PLAY ALONG DURING THE SHOW!
KEEP AN EYE AND AN EAR OUT FOR 80S
LINGO, STYLE, AND PROPS.

"Bite me"	Video Game Logo/Character	"Excellent"	Tube Socks	"Valley Girl"
1985 Reference*	"Stay Frosty"	Rubik's Cube	"Bombdiggity"	Big Scrunchie or Bow
"Gag me with a spoon"	Crimped Hair		Saturday Morning cartoon logo/character	"Bodacious"
Neon Jewelry/ Makeup	"Nobody puts ____ in the corner"	Slinky	"Dip (out)"	Boombox
"Take a chill pill"	Vans, Converse/Chuck Taylors, or Keds	"Righteous"	"Brick" Phone	"Gnarly"

*A REFERENCE TO ANYTHING THAT NOTABLY
HAPPENED IN OR PREMIERED IN 1985. FOR
EXAMPLE: BACK TO THE FUTURE, JEM AND THE
HOLOGRAMS, LIVE AID, ENDER'S GAME BY
ORSON SCOTT CARD, ETC.

ARTISTIC DIRECTOR AND ACCOMPANIST



1983

Chad Sheridan - Chad is thrilled to continue serving as the Northland Chorale's Artistic Director! He has been directing for 4 years and performed with the Chorale for 5 years before that. When not with the chorale, Chad is a music teacher at Stukey Elementary School, where he directs two choirs and the annual musical production. During his professional music career, Chad performed with the Kantorei choir in Rockford, Illinois, and also had the pleasure of sharing the stage with greats such as John Denver and Kenny Rogers! Chad was honored to perform with the Northland Chorale and Stukey singers at Red Rocks Amphitheater in 2017. When not performing, Chad greatly enjoys spending time with his family and traveling.

Patti Abbate - Patti brings a wealth of expertise and knowledge to 21 years of NLC. As a performance/rehearsal accompanist, contract musician, and private piano teacher, Patti has shared her talents within churches, musical theater, dance studio and other performance groups in both Colorado and Florida. We are thankful for the musical talent she brings, and looking forward to more great seasons ahead.

1985



NORTHLAND CHORALE LEADERSHIP TEAMS

CHOREOGRAPHY

Mary Flaherty, Steven George,
Karen Greening, Jayden Hughes,
Rachel Raudabaugh, & Chad
Sheridan

COSTUMES

Rachel Raudabaugh

PRODUCTION

Steven George, Jayden
Hughes, Kristin Hurley,
Dene Merrow, Rachel
Raudabaugh, Chad
Sheridan, & Marcie Vogel

GRANT

Carol Anthony & Mary Flaherty

ABOUT US



Our mission is to enrich the community through music and performing arts while fostering an environment in which members can express their creativity and grow as artists. We are so excited to be performing this show for you! This show represents the cumulative effort and passion of our entire group - every single person on stage owns this show!



JOIN US

Do you like to bop and boogie? Has it been a hot minute since you've performed? If you've ever seen us on stage and thought to yourself, "That's radical, I bet I could do that!" We totally encourage you to audition for the Northland Chorale Show Choir! Auditions will be held once again in August 2025. Be sure to stay tuned into northlandchorale.org for more details!

FOLLOW US ON FACEBOOK AT  [FACEBOOK.COM/NORTHLANDCHORALE](https://www.facebook.com/northlandchorale)
FOR UPDATES AND UPCOMING EVENTS!

STUKEY NOTES MEMBERS PERFORMING THRILLER AND DYNAMITE

Janessa Arledge	Cecilia Peiffer
Ellie Barry	Ian Sanchez Pineda
Angela Garcia Lomeli	Maria Sanchez Pineda
Victoria Gomez	Danny Sheridan
Ahlilunah Little Thunder	Andrew Travis Adams
Eilythyia Little Thunder	Lula Walker
Melanie Miranda Arce	

STUKEY SINGERS

Stukey Elementary School, part of the Adams 12 Five Star School District, has been an integral part of the Northglenn community, serving its neighborhood children since 1968. The Stukey Singers Choir started in September 2014, and is the vision of director and Music Teacher Chad Sheridan. In choir, we promote motivation, self-confidence, perseverance, creativity, and teamwork. We love sharing our talents and potential with the community! We consider music and the arts to be a crucial part of a well-rounded education. These students are the future of our community, and through our talents we are able to reach for the stars! We are proud and excited to partner once again with the Northland Chorale Show Choir. If you'd like to see the Stukey singers in action, please join us on May 20th and 21st, 2025 for our production of Annie Jr.!

STUKEY SPECIAL THANKS

Parents and guardians can be the unsung heroes within the Arts, as they are crucial for developing the next generation! We offer a hearty thanks to the parents and guardians of the Stukeley Notes for everything they do: transportation to and from rehearsals, assisting with costumes, donating their time, purchasing snacks and tickets, and most importantly, attending their children's performances.



We thank you, our audience, and the Scientific and Cultural Facilities District (SCFD) for helping us perform this show for you! For your monetary support of our craft, we offer you a robust round of applause and heaps of gratitude! We invite you or your organization to support the chorale and the arts in the Denver area by making a tax-deductible donation to our organization. For more information, please visit our website at northlandchorale.org/donate or speak with any member.

THIS SEASON'S SPONSORS

We would like to give special thanks to those who gave \$100 to sponsor songs in this very show. Thank you so much for supporting the arts and the Northland Chorale Show Choir this season!

Clear Creek Law -
Sponsoring The Encore
Number (Just wait and See!) Dollar & Co Real Estate -
Myrna Dollar, Broker



Savage Home
Inspections LLC -
Colorado Springs
Area only



Turn Up the Volume
Salon -
<https://amandagordon1.glossgenius.com>



From Jenna McCormick - "Break a leg Mary, Dene, and Karen! We wish we could be there! In loving memory of Terry Stanford. Love, The McCormick and Stanford families."

Covr Roofing -
Connor Greening

Drew Morris for
Thornton City Council



VOTE
DREW MORRIS
FOR THORNTON CITY COUNCIL

MADISON REED®

We Can't Wait to
Color Your Hair!

SPECIAL OFFER

25% OFF
YOUR FIRST SERVICE*

Use Code: **NORTHLAND25**

Scan Here to Book:

*New guests only.
Valid through
5/31/25. See site for
details.

Madison Reed - Christopher Melchi

Swan Counseling Services: Therapy for Couples and Individuals



<https://www.psychologytoday.com/us/therapists/dawn-swan-northglenn-co/159855>

<https://www.justbeingchurch.org/northglennucc>

"Thank you, Northland Chorale, for sharing the joy of music!"



UNITED CHURCH
OF CHRIST

10500 Grant Dr
Northglenn, CO

80233-4116

Phone: 303-451-6655

NON-BUSINESS SPONSORS & IN-KIND DONATIONS

ANONYMOUS

TOMMY ACIERNO

CAROL ANTHONY

PAULETTE BATEY

CAMILLE BUTLER

ALAIN BRÛLÉ

SARAH DAVISON-TRACY

LISA HURD

KIMBERLEY JENSEN

DENE, CHERYL, & ARIEL MERROW

JILL PARSONS

JIM & MILLIE PATTERSON

MARCIE & UNCLE PAUL VOGEL

SHIRELL WHITE

WEST JEWELL PLACE - LAKEWOOD, CO

COLORADO GIVES 365



We are beyond grateful to be part of Colorado Gives 365! In 2024, donors like you helped raise more than \$54 million for Colorado nonprofits on Colorado Gives Day. Colorado Gives began in 2010 and has raised more than \$469 million since! Although Colorado Gives Day isn't until December 10th, we are able to receive donations year-round through our website Northlandchorale.org as well as Coloradogives.org. You can find us under Northland Fine Arts Association AKA the Northland Chorale. We understand there are many deserving organizations competing for your charitable contributions, and donations in any amount are greatly appreciated!

PERFORMING MEMBERS - THROWBACK STYLE!



1



2



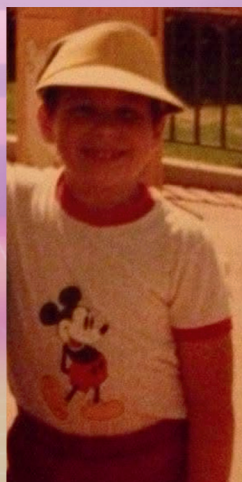
3



4



5



6

1. Kristin Hurley, 1988
2. Jamie Brown, 1989
3. Tracy St. Denis (and her daughter), 1985
4. Myrna Tilton-Dollar, 1987
5. Karen Greening, 1985
6. Chad Sheridan, 1986

WE WANT TO HEAR FROM YOU!



Scan the above code to complete a
post-show survey!

Or go to
<https://forms.gle/ardG1Lq9vWbB4Dxz5>

FUN FROM THIS SEASON



DJ Glitch
(Marcie Vogel)
& Beverly Vogel



Nidia and
Elisa
Warner



Tracy Fehring
(non-performing
member)



DJ Sunbird
242
(Dawn Swan)
& Loki Swan



Candice Lugar
(Karen Greening)
& Loretta
Southerland



Vintage 84
(Rachel Raudabaugh)



Miss Mousey
(Olympia Munoz)

COMING SOON

To the Northland Chorale



OCTOBER 17TH-19TH, 2025

PARSONS THEATRE

1 E MEMORIAL PKWY

NORTHGLENN, CO 80233

NORTHLANDCHORALE.ORG